

Series: COMPACT-FAN Type D/DS
 EC-MOTOR
 double inlet
 with forward curved blades

FISCHBACH

Luft- und Ventilatorentechnik GmbH

Type: D540/EM25

ERP KONFORM

CE -conform

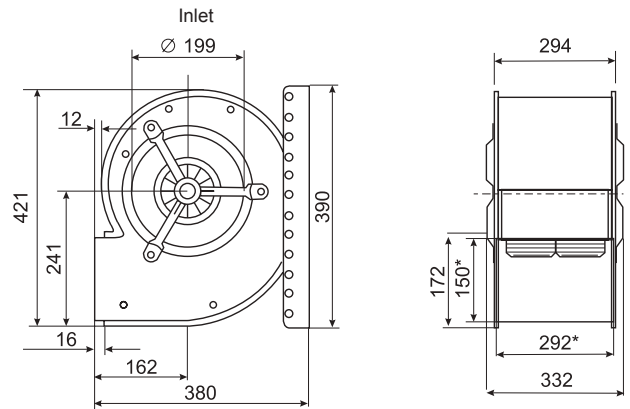


Forgalmazó:
 Oxyrna Systems Kft.
 3433 Nyékládháza, Ady Endre u. 49/A

phone: +36 (30) 665-5982
 internet: www.fischbach-air.hu
 email: oxyrna@oxyrna.hu

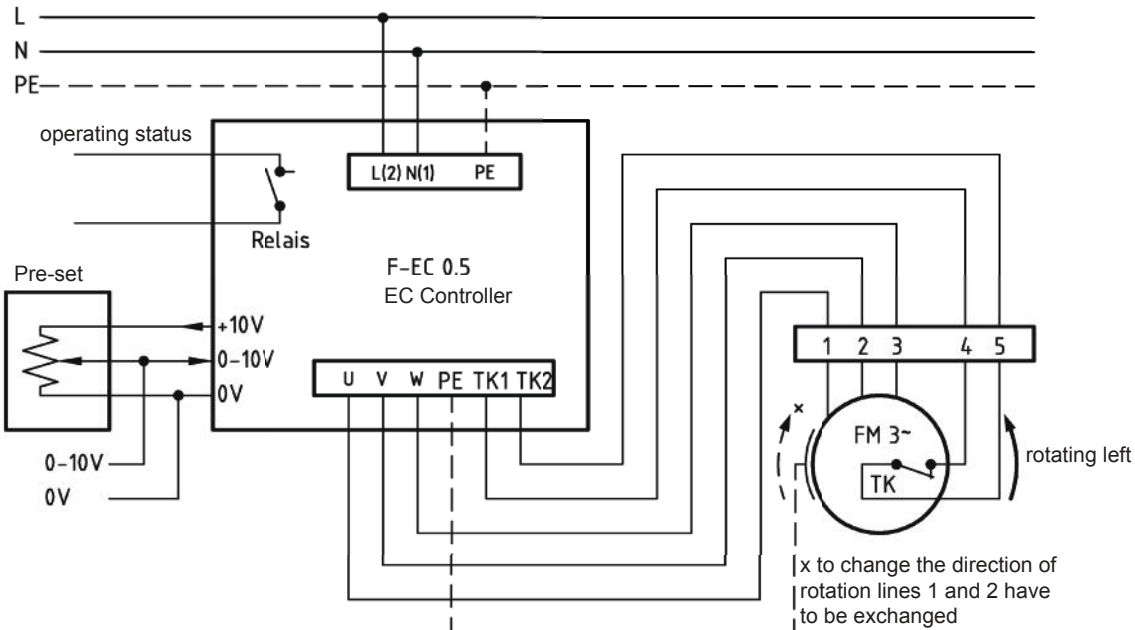
Technical Data

weight:	(kg)	16,5
material housing:	steel, galvanized	
material impeller:	steel, galvanized	
direction of rotation:	left	
protection class:	IP 65	
insulation class:	F	
motor protection:	thermal contact	



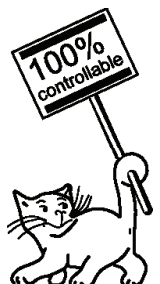
*external dimension of discharge

**connection plan*
 F-EC 0.5**



* Connection only according to the enclosed technical documentation.

the silent one



Series: COMPACT-FAN Type D/DS
EC-MOTOR
 double inlet
 with forward curved blades

FISCHBACH
 Luft- und Ventilatorentechnik GmbH

Type: D540/EM25

Erp 2013 2015 2018 x

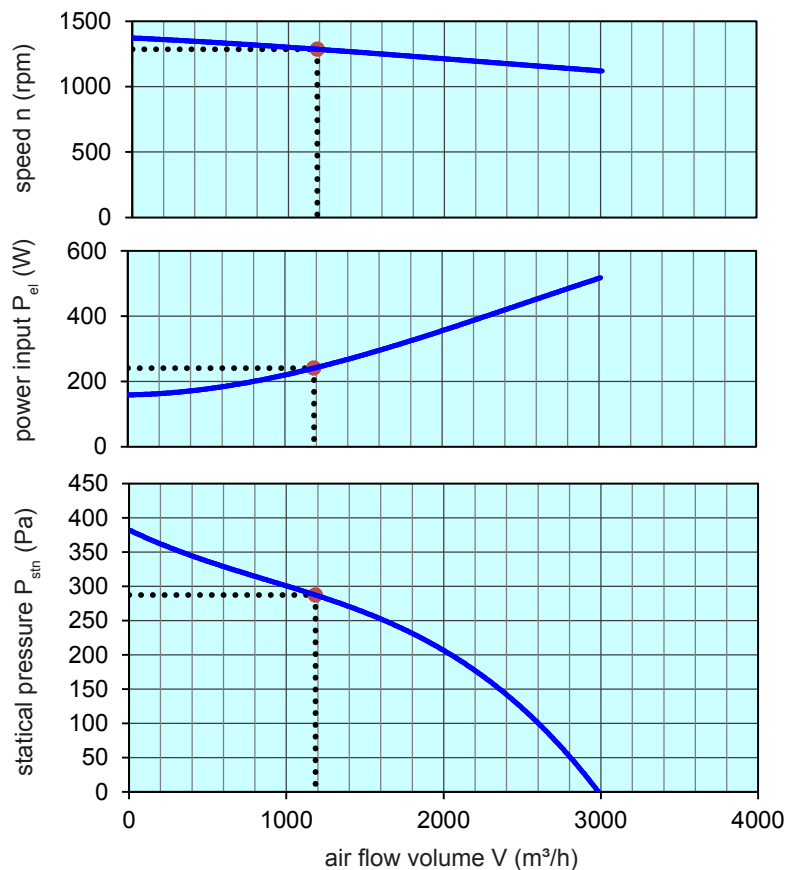
Performance data

main voltage: (V) 230 (1~)
 frequency: (Hz) 50
 current max.: (A) 3,5
 power input max.: (kW) 0,52
 air flow volume max.: (m³/h) 3010
 statical pressure max.: (Pa) 381
 speed max.: (rpm) 1365
 supply air temperature: (°C) -25... +60
 capacitor: (µF) -

ErP-Data:

total efficiency fan (η_e): (%) 44,5
 installation category: A
 efficiency category: static
 efficiency grade: N (%) 42
 target efficiency (η_{target}): (%) 33,2
 speed controller: yes
 year of manufacturing: since 2015
 manufacturer: Fischbach Luft- und Ventilatorentechnik GmbH
 D-57290 Neunkirchen / HRB 5804 Siegen
 order no. 18111870
 power input: (kW) 0,24
 air flow volume: (m³/h) 1185
 statical pressure: (Pa) 287
 speed: (rpm) 1285
 specific ratio: 1

disassembling/recycling/disposal: see page decommission
 installation/operation/maintenance: see operating and mounting instructions
 measurement for determination of efficiency without additional items



control with	type	order-Nr.
FISCHBACH-EC-controller	F-EC 0.5	63003
FISCHBACH-Pre-set 0-10V (optional accessories)	FS 10	69460

Technical documentation according to page: **General information**